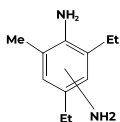


## ETHACURE® 100-ULC Curative

CAS Number	68479-98-1
EINECS/EC	270-877-4
Molecular Formula	C <sub>11</sub> H <sub>18</sub> N <sub>2</sub>

### APPLICATION



ETHACURE® 100-ULC is a super low-color curing agent developed for optically clear applications. It is commonly used in clear polyurethane and polyurea elastomers, transparent coatings, and applications requiring tight color control and long-term appearance stability.

### SPECIFICATION

Property	Value
3,5-diethyltoluene-2,4-diamine, %	75-81
3,5-diethyltoluene-2,6-diamine, %	18-24
Dialkylated m-phenylenediamines, %	0.5-3
Water, %	<0.05

### PHYSICAL PROPERTIES

Property	Value
Appearance	clear*
Color, Yellow Index	~2.0 (when packaged)
Molecular weight	178.3
Boiling point °F (°C)	555 (308)
Density at 68°F (20°C), g/ml	1.022
Density at 68°F (20°C), lb/gal	8.50
Pour point, °F (°C)	15 (-9)
Flash point (PMCC), °F (°C)	336 (169)
Viscosity at 68°F (20°C), cSt	280
Viscosity at 77°F (25°C), cSt	155
Solubility - Ethanol	Miscible
Solubility - Toluene	Miscible
Solubility - Water	1.0
Equivalent weight with isocyanates	89.1
Equivalent weight with epoxy resins	44.6

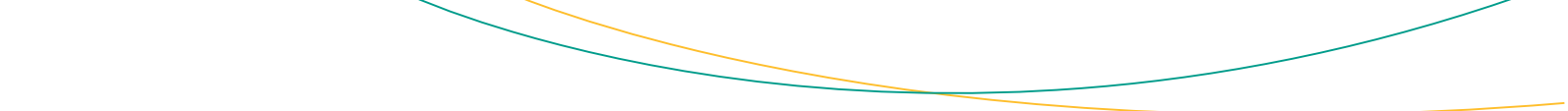
*An asterisk (\*) indicates that this will darken with time and exposure to air.*

### HANDLING & STORAGE

Before handling or using this product, the material safety data sheet should be read and understood. This can be obtained from your Albemarle sales representative.

### OTHER INFORMATION

Further Related Documents                      Safety Data Sheet



The information presented herein is believed to be accurate and reliable, but is presented without guarantee or responsibility on the part of Albemarle Corporation and its subsidiaries and affiliates. It is the responsibility of the user to comply with all applicable laws and regulations and to provide for a safe workplace. The user should consider any health or safety hazards or information contained herein only as a guide, and should take those precautions which are necessary or prudent to instruct employees and to develop work practice procedures in order to promote a safe work environment. Further, nothing contained herein shall be taken as an inducement or recommendation to manufacture or use any of the herein materials or processes in violation of existing or future patent.

Technical data sheets may change frequently. You can download the latest version from our website [www.albemarle.com](http://www.albemarle.com).

Please contact us at [www.albemarle.com/contact](http://www.albemarle.com/contact) with questions.