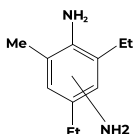


ETHACURE® DETDA

CAS Number	68479-98-1
EINECS/EC	270-877-4
Molecular Formula	C ₁₁ H ₁₈ N ₂

APPLICATION



Diethyltoluenediamine is an effective extender for polyurethane elastomers, particularly in RIM applications. Other uses are as curing agent for polyurethanes and epoxies; antioxidant for elastomers, lubricants and industrial oils; and as a chemical intermediate.

SPECIFICATION

Property	Value
3,5-diethyltoluene-2,4-diamine, %	75-81
3,5-diethyltoluene-2,6-diamine, %	18-24
Dialkylated m-phenylenediamines, %	0.5-3
Water, %	<0.08

PHYSICAL PROPERTIES

Property	Value
Appearance	clear, amber liquid *
Molecular weight	178.28
Boiling point, °C (°F)	308 (586)
Density at 20°C, g/mL	1.022
Density at 20°C, lbs/gal	8.50
Pour point, °C (°F)	-9 (15)
Flash point, TCC, °C (°F)	135 (>275)
Viscosity at 20°C, centistokes	280
Viscosity at 25°C, centistokes	155
Solubility – Ethanol	Miscible
Solubility – Toluene	Miscible
Water	1.0

An asterisk (*) indicates that this will darken with time and exposure to air.

HANDLING & STORAGE

Before handling or using this product, the material safety data sheet should be read and understood. This can be obtained from your Albemarle sales representative.

TRANSPORT & PACKAGING**Container sizes:**

Tank cars
Tank trailers
Drums: 5-gallon and 55-gallon, non-returnable, steel

Shipping classification:

U.S. DOT: not regulated in transportation
IMCO or ICAO: Class 9

Other information:

US TSCA Chemical Inventory Number: CAS 106264-79-3

OTHER INFORMATION

Further Related Documents

Safety Data Sheet

The information presented herein is believed to be accurate and reliable, but is presented without guarantee or responsibility on the part of Albemarle Corporation and its subsidiaries and affiliates. It is the responsibility of the user to comply with all applicable laws and regulations and to provide for a safe workplace. The user should consider any health or safety hazards or information contained herein only as a guide, and should take those precautions which are necessary or prudent to instruct employees and to develop work practice procedures in order to promote a safe work environment. Further, nothing contained herein shall be taken as an inducement or recommendation to manufacture or use any of the herein materials or processes in violation of existing or future patent.

Technical data sheets may change frequently. You can download the latest version from our website www.albemarle.com.

Please contact us at www.albemarle.com/contact with questions.